



LEASEHOLD

Apartment

FIVE ELMS ROAD, DAGENHAM, RM9 5TS

Guide Price

£200,000

FEATURES

- Guide Price £200,000 - £210,000
- One Bedroom
- Fitted Kitchen
- Separate WC
- ***CHAIN FREE***
- Lounge
- Bathroom
- Gas Central Heating



1 Bedroom Apartment located in Dagenham

Entrance

Via Communal staircase to first floor. Communal landing. Private door to

Hallway

Two storage cupboards. Radiator. Doors to

Lounge

12'6" x 12'7"

Two double glazed windows. Radiator.

Kitchen

9'11" x 6'10"

Range of fitted wall and base units with roll top work surfaces. Stainless steel single drainer sink unit with mixer taps. Tiled splash backs. Spaces for washing machine and cooker. Built in cupboard. Wall mounted boiler. Double glazed window.

Bedroom One

12'6" x 9'5"

Double glazed window. Radiator. Wardrobes.

Bathroom

6'7" x 4'7" max

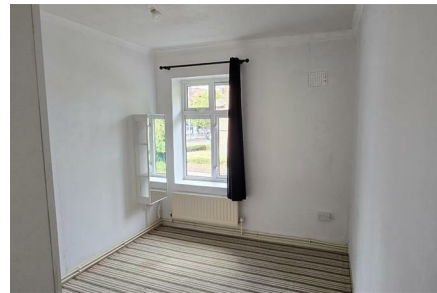
Double glazed window. Panelled enclosed bath with shower attachment. Wash hand basin. Tiled walls. Radiator. Double glazed window.

WC

4'5" x 2'5"

Low level WC. Laminate effect wood flooring. Double glazed window.

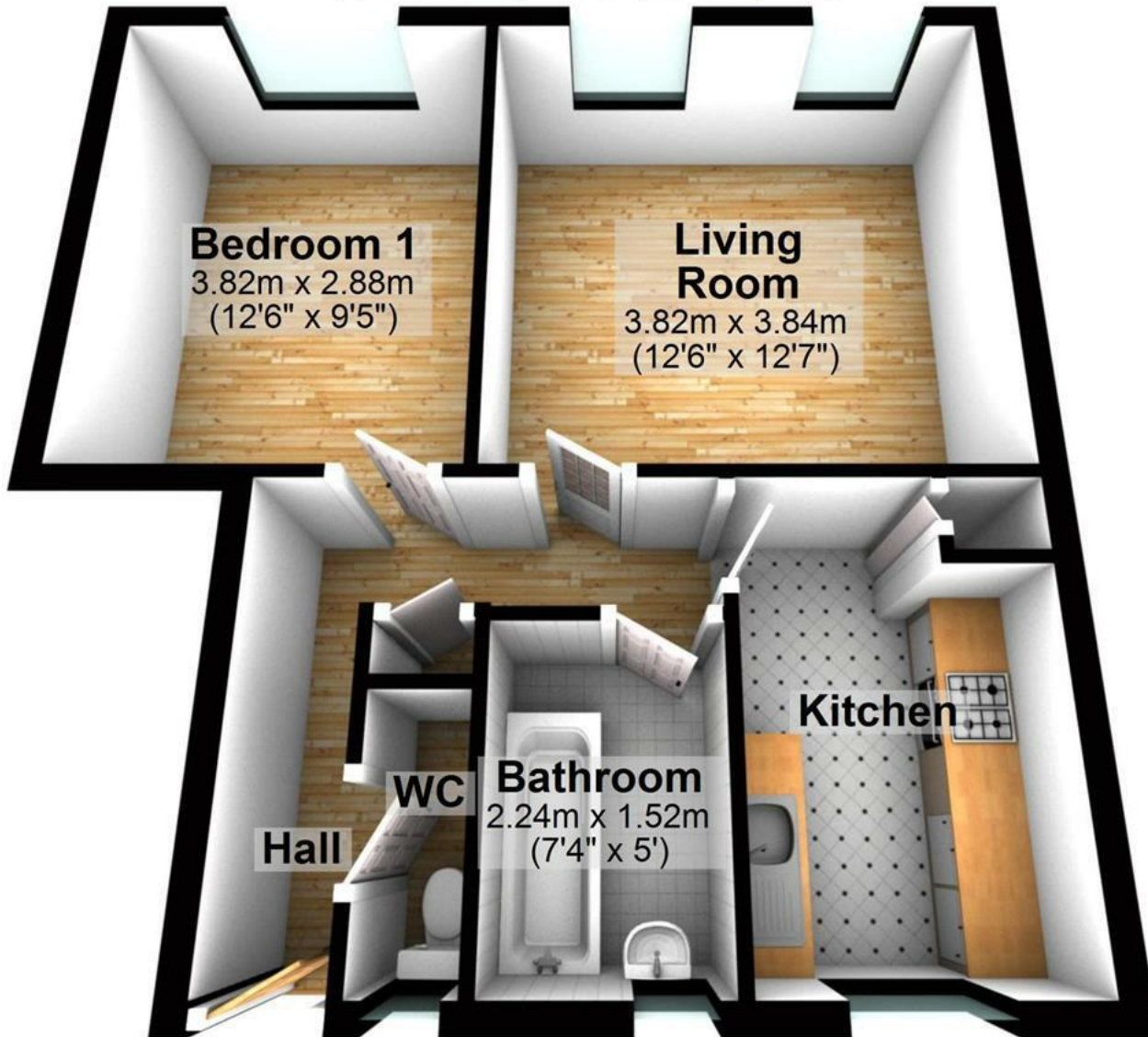
We routinely refer potential purchasers to Move with Us Ltd. It is your decision whether you choose to deal with Move with Us Ltd. In making that decision, you should know that we receive an annual payment benefits from Move with Us Ltd, equating to approximately £314.48 per referral.



DAGENHAM SALES | STEPS ESTATE AGENTS, 298 HEATHWAY, DAGENHAM, ESSEX, RM10 8LU

First Floor

Approx. 43.9 sq. metres (472.5 sq. feet)



Total area: approx. 43.9 sq. metres (472.5 sq. feet)

FOR GUIDANCE PURPOSES ONLY
Plan produced using PlanUp.

Call us on

020 8593 5933

dagenham@steps.me.uk

www.steps.me.uk

Council Tax Band

B

Energy Efficiency Rating		Current	Potential
Very energy efficient - lower running costs			
(92 plus) A			
(81-91) B			
(69-80) C			
(55-68) D		58	65
(39-54) E			
(21-38) F			
(1-20) G			
Not energy efficient - higher running costs			
England & Wales		EU Directive 2002/91/EC	

Agents Note: Whilst every care has been taken to prepare these particulars, they are for guidance purposes only. All measurements are approximate and are for general guidance purposes only and whilst every care has been taken to ensure their accuracy, they should not be relied upon and potential buyers are advised to recheck the measurements.

